



Global Network Visibility

GLOBAL NETWORK VISIBILITY

IPsonar Highlights

- ▶ Non-intrusively scans and identifies all known and unknown network assets across the entire enterprise.
- ▶ Fingerprints devices to detect services, wireless access points, and operating system information.
- ▶ Easily exports data to network management and vulnerability management tools.
- ▶ Quickly and intelligently relates results, presenting them in intuitive, comparable, detailed maps to drive decision support.
- ▶ Provides configurable reports that can be adjusted according to changing needs and environmental factors.
- ▶ Determines if devices have connectivity beyond the network perimeter or across secure zones.
- ▶ Identifies and alerts on improperly configured routers or security devices.
- ▶ Scales to world's largest environments using a multi-tier architecture.

Lumeta® provides large enterprises and government agencies with network assurance solutions that allow them to balance network change with risk management and compliance imperatives. By measuring the impact of change on risk and availability, Lumeta helps clients successfully manage challenges such as:

- New application deployments
- Vulnerability and incident management programs
- Mergers, acquisitions, and network consolidation
- Security policy compliance and audit
- Operating system and infrastructure updates

Lumeta's IPsonar® creates a foundation for network assurance by providing global network visibility and measuring risk from a network perspective. Built on technology originally used to map the Internet, IPsonar maps every asset on a network — including assets not currently under management — to visually analyze the connectivity between assets and networks, uncovering risk patterns and policy weaknesses.

IPsonar provides many of the world's most security-conscious organizations with insight into complex networks. IPsonar complements network management and security technologies, enabling IT managers to:

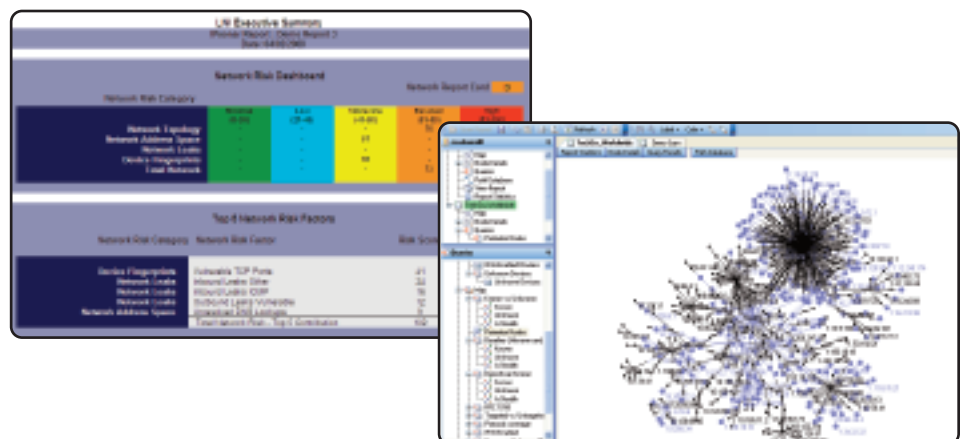
Find all known and previously unknown network address space, network and security devices, and connectivity. Visualize results using intuitive maps and reports.

Secure the network by addressing policy weaknesses, such as poorly configured security devices or unauthorized connectivity. Pinpoint areas of risk to prioritize vulnerability scanning and remediation.

Measure risk from a global network perspective using a simple executive scorecard. Use results to establish a baseline and compare deviations over time. Proactively manage issues to keep within pre-determined thresholds.

Comply with established network and security policies — as well as regulatory mandates — by validating that controls are functioning properly. Establish network risk metrics that can be used to assess compliance posture.

Leverage investments in network solutions and discover information that helps make existing investments more efficient.



Lumeta IPsonar: Delivering Global Network Visibility

IPsonar is the only solution that integrates Network Assurance data across the risk and IT management lifecycles by providing global visibility into risk from a network perspective. IPsonar visually maps every known and hidden asset on a network, so organizations can uncover risks to availability, security, and compliance and prioritize remediation, resolving issues before they result in costly downtime or weaknesses.

IPsonar actively scans the network to provide Network, Host, Leak, and Device Fingerprint Discovery – without compromising network bandwidth or availability. Scan results are quickly and intelligently related in color-coded maps, with issues flagged. Users apply IPsonar’s query and visualization tools to explore this information, discovering connections and patterns that improve decision-making. Regular “re-scanning” assures that IPsonar reflects current network status. These capabilities form the foundation of a network assurance program by creating a complete picture of the network based on a comprehensive set of facts.

IPsonar empowers IT organizations to:

- **Balance compliance and change.** Periodically monitor to assure that new mandates and resources do not compromise compliance efforts. Resolve issues before they are discovered in audits. Depend on IPsonar’s objective reports, not word-of-mouth or extrapolation.
- **Maintain service availability.** View the changing network at both a macro- and micro-level to create project plans that minimize adverse impact to service. Integrate scan results to network management tools for faster, more accurate problem diagnosis.
- **Strengthen security.** Identify and automatically prioritize security vulnerabilities. Receive alerts that enable proactive issue management. Use results to maximize performance of intrusion detection and access management tools. Validate that remedial actions are implemented as directed.
- **Validate policy compliance across the enterprise.** Align IT responsibilities with network visibility. Scan resources and assure compliance across headquarter, division, remote, and partner networks.
- **Unlock savings.** Gain intelligence to plan consolidation and optimization efforts. Pinpoint and remove inefficiencies, such as remnants of divested units or poorly engineered branch networks.



“IPsonar provides enhanced visibility into the previously unknown parts of a company’s network, with a scalability and level of detail distinctive from the auto-discovery capabilities available in the fault- and performance-management products available today.”

– Dennis Drogseth, Enterprise Management Associates

"To accurately know what's on our network, we needed an intelligent tool capable of mapping our entire network and quantifying risk, and found it with IPsonar. In fact, IPsonar is a key component of our M&A strategy because we're able to instantly assess the impact of network consolidation,"

– Raymond Ray, Group Infrastructure and Security Manager, Smiths Group

IPsonar scans the network discovering a variety of information:

Routes	Servers	Unauthorized connections
Routers	Wireless access points	Poorly-configured security devices
Hosts (authorized or not)	Operating system information	Perimeter leaks

Professional Services: Accelerating Time to Value

- ▶ **IPsonar Custom Services.** Lumeta offers any combination of project management and IPsonar configuration, scanning, and reporting.
- ▶ **Managed Services.** Clients may outsource IPsonar's implementation, operation, and maintenance to Lumeta.
- ▶ **Network Assurance Services.** These services enable clients to rapidly address common change drivers and management objectives (e.g., IPv6 migration, network risk assessment, asset verification, application visibility, policy compliance, etc.).
- ▶ **Training and Education.** Customizable courses are available – visit www.lumeta.com/services for further information

The Lumeta Network Index (LNI): Quantify Global Network Risk

IPsonar's LNI creates an executive scorecard that quantifies network risk. The higher the score, the greater the risk to availability, security, and compliance. This scorecard can be used on its own or as an integrated part of IPsonar's capabilities.

With the LNI, clients develop an objective network risk profile. Deviations from this baseline profile are then measured as conditions change.

The LNI evaluates networks based on 34 risk variables in four key categories: network topology, address space, leaks, and device fingerprints. Risk levels are assigned to potential security incidents or operational inefficiencies using probability weighting developed by a collection of security experts and statisticians.

In addition, the LNI ranks major contributing factors, so that executives can prioritize risk mitigation tasks and, upon re-scanning with IPsonar, validate their implementation.

The LNI:

- ▶ Measures objectively using network facts, not assumptions.
- ▶ Prioritizes contributing factors to network risk, so that IT executives efficiently apply limited security and compliance resources.
- ▶ Gauges whether the network is growing more or less exposed to risk.

About Lumeta Corporation

Lumeta empowers large enterprise and government agencies with global network visibility, allowing them to understand how network change affects security, availability, and compliance.

Lumeta's IPsonar is the industry's only network assurance solution that discovers and maps every asset on a network, including assets not currently under management. This capability enables IT professionals to analyze the connectivity between assets and networks, uncover risk patterns, and automate the enforcement of network policies.

With this level of network assurance, IT organizations can harden security, improve business continuity, and deploy new services without impacting its ability to deliver existing services.

www.lumeta.com

Corporate Headquarters
220 Davidson Avenue
Somerset, NJ 08873

PHONE 732.357.3500
866.LUMETA7 (586.3827)

FAX 732.564.0731

US Federal Headquarters
8260 Greensboro Drive
Suite 425
McLean, VA 22102

PHONE 866.LUMETA7 (586.3827)

European Headquarters
New Broad Street House
35 New Broad Street
London EC2M 1NH
United Kingdom

PHONE +44 (0) 207.194.8040